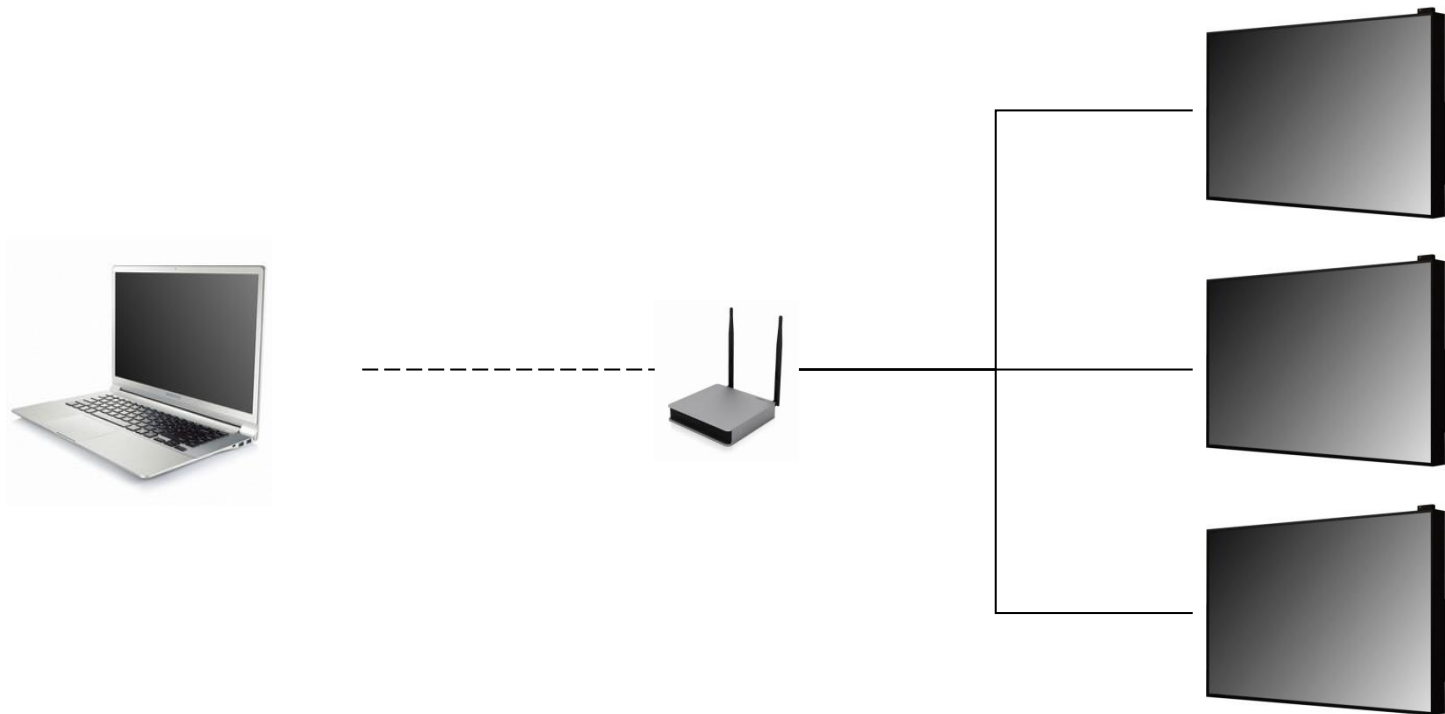



Monitor Control Installation

Ver.2.02.08

TCP / IP MODE

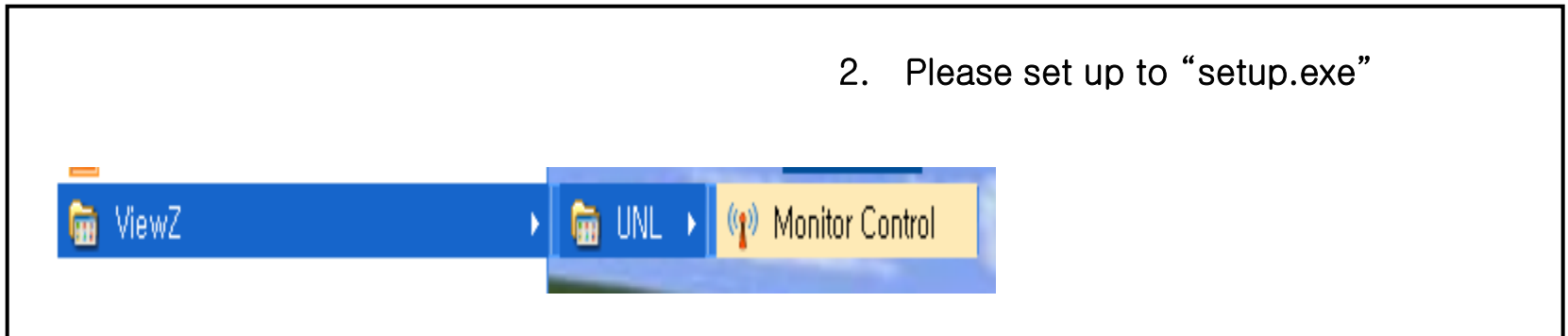


Installation guide



The diagram illustrates the first step of the installation process. On the left, a CD-ROM is shown with the text "Monitor Control" at the top, the "ViewZ" logo in the center, and "L39AC0504_Rev0" at the bottom. A blue arrow points from the CD-ROM to a CD-ROM icon on the right, which is labeled "Monitor Control (F:)" and "CD-R". Below the arrow, the text "1. Please install the Monitor Control program CD into the CD-ROM" is displayed.

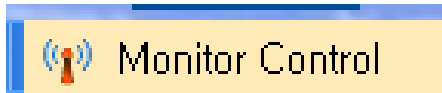
1. Please install the Monitor Control program CD into the CD-ROM



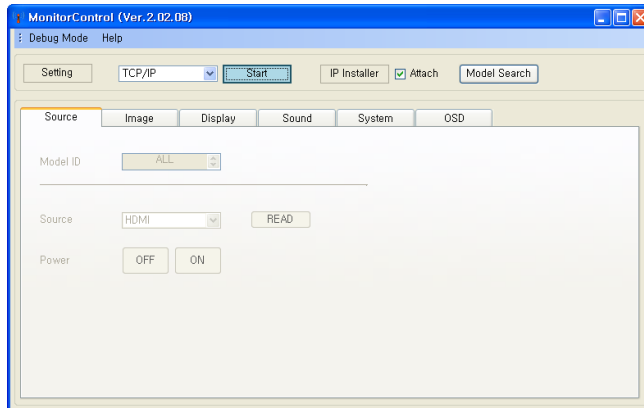
The diagram illustrates the second step of the installation process. It shows a navigation path starting from the "ViewZ" folder, then to the "UNL" folder, and finally to the "Monitor Control" folder. The "Monitor Control" folder is highlighted in yellow. Below the navigation path, the text "2. Please set up to 'setup.exe'" is displayed.

2. Please set up to "setup.exe"

Installation guide



3. Please run the Monitor Control program



4. After execute the program, Monitor Control tap will be appear.

Main Display (TCP/IP Set)

Setting

Serial TCP/IP

Realtek PCIe GBE Family Controller - 패킷 스

IP Address 192.168.9.154

Netmask 255.255.255.0

Gateway 192.168.9.1

Mac Address AC-22-0B-CD-C4-61

UDP Port 8009

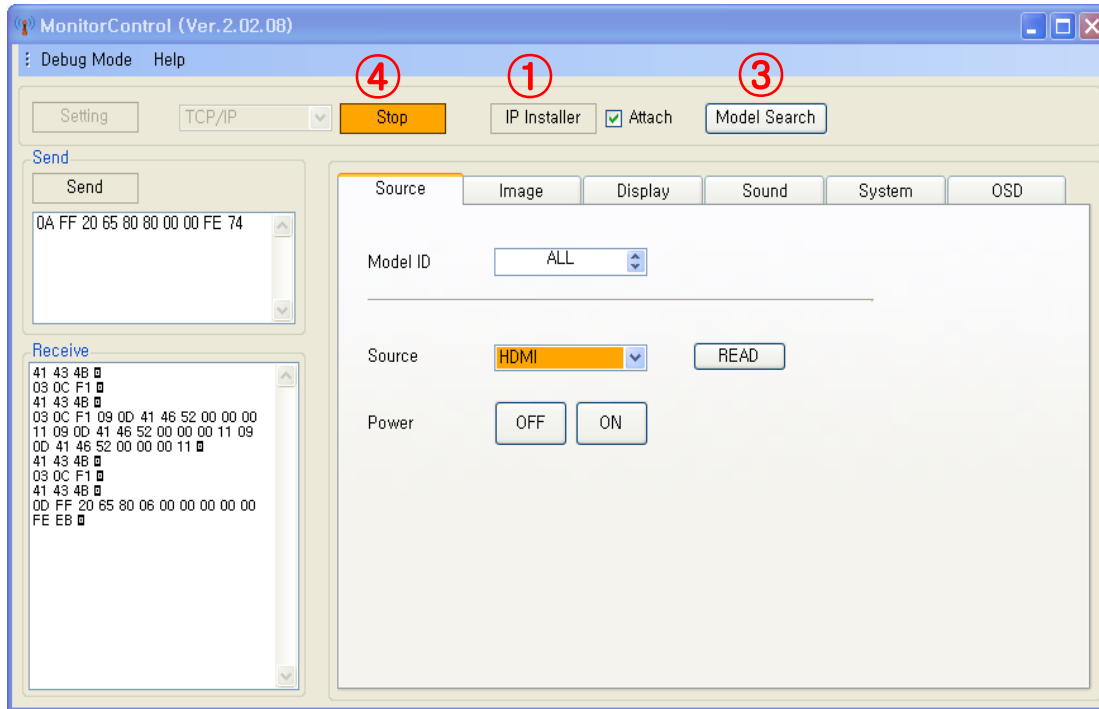
TCP Port 9761

Cancel OK

Please set the Ethernet port

- Please select compatible Ethernet card(LAN card)
- Do not change UDP port and TCP port.

Main Display (Monitor Control - Connect)

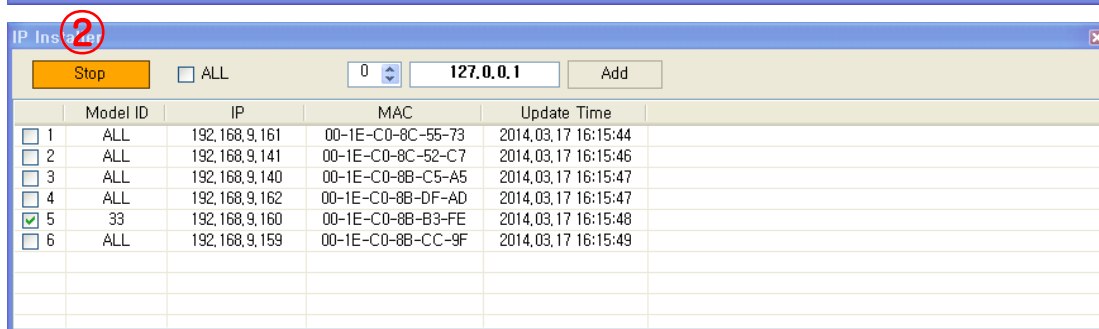


① Please click "IP Installer", new window show in bottom

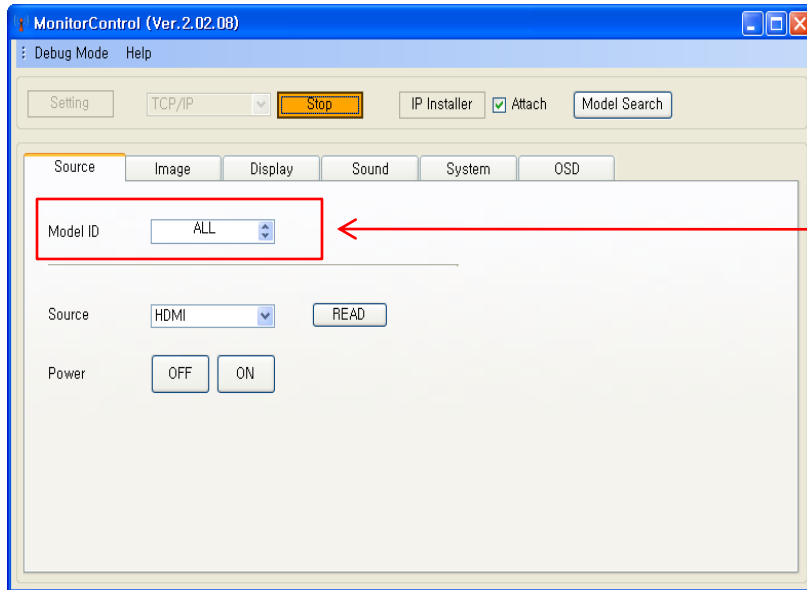
② Please click "Update", UNL monitor(s) show in list. And it find Monitor(s) Until press "stop" button

③ Please click "Model Search", Model ID of UNL monitor(s) show in list

④ Please click "Start" or "Stop", tab view will be active or inactive.

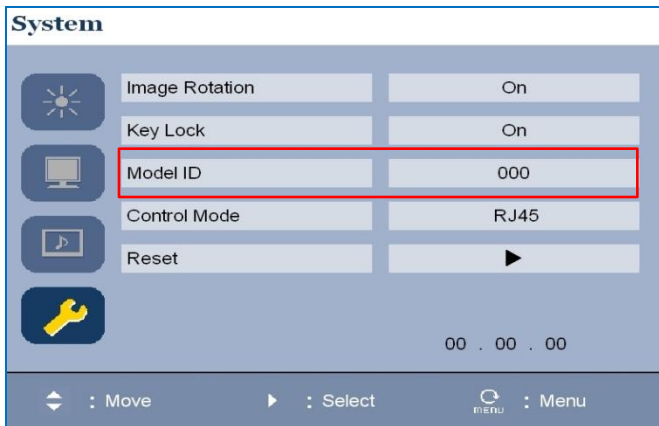


Main Display (Monitor Control-Model ID)

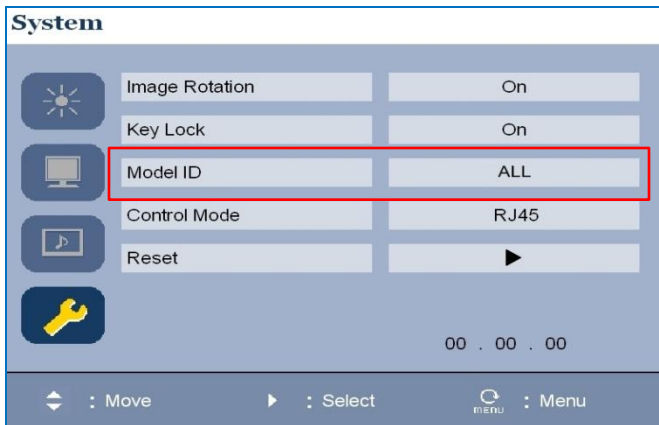


If the user set it as "All" then one image can be display in all monitor or each monitor can be display separate images by user can designated the ID # to each monitor.

Model ID setting

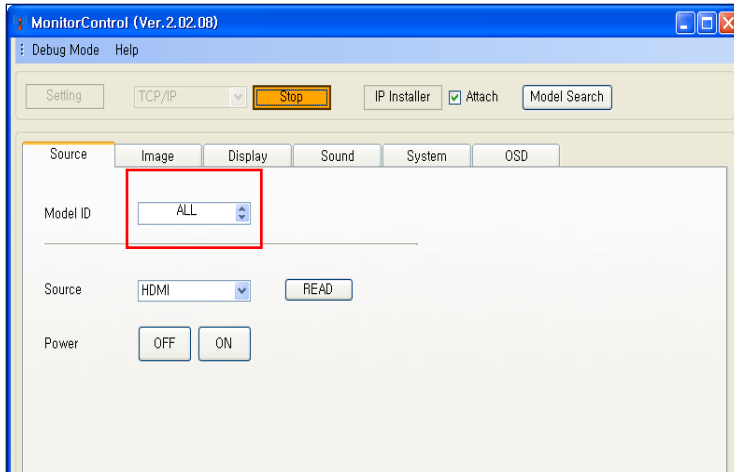
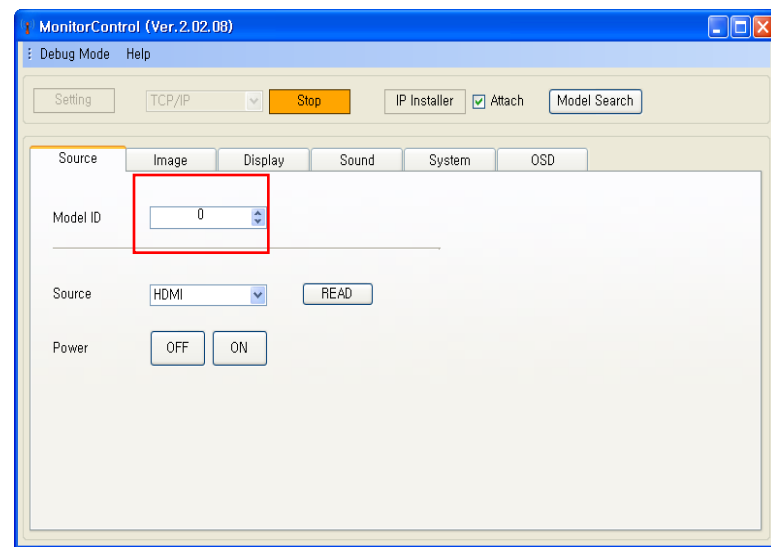
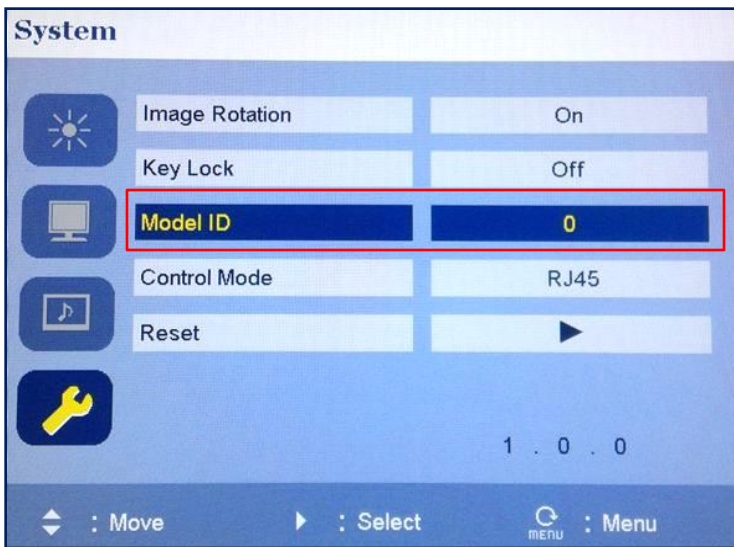


Please set up the each individual monitor ID # at the monitor OSD menu.



- Model ID # can be set from 0 to 100 at the monitor OSD menu.
- Model ID # on the monitor control program can be set as "All" or 0 to 100.

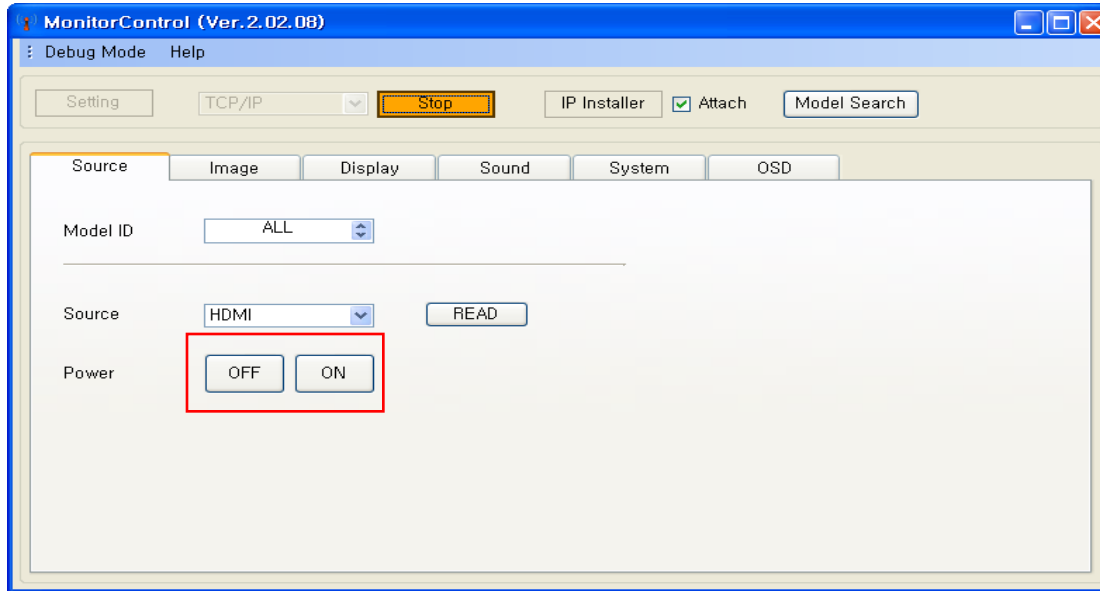
Model ID setting



If user want to show different contents in each individual monitor, Model ID in OSD menu & Model ID in Monitor program has to match.

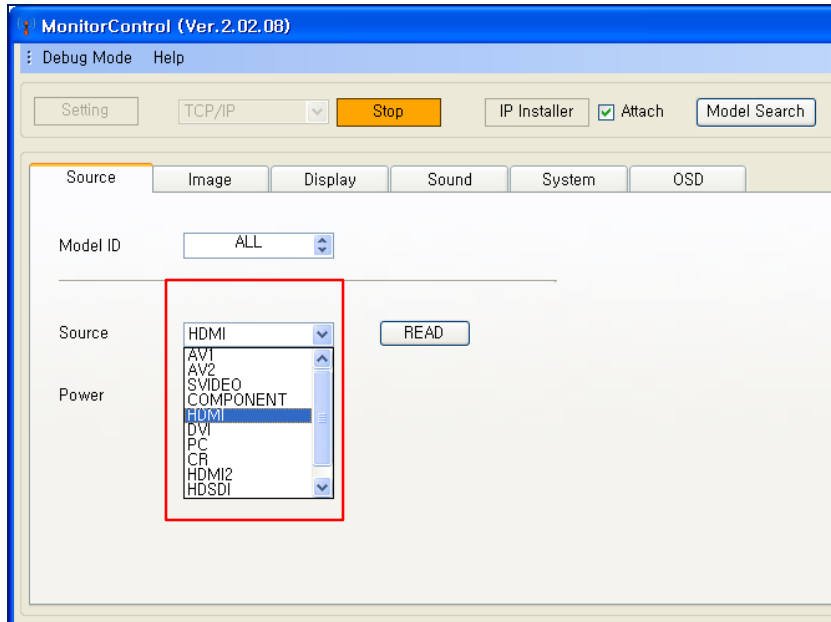
If user want to show one image in all monitor, user have to set the model ID # as All in Monitor control program.

Main Display (Monitor Control - Power On/Off)



The user can turn/off the monitor via Monitor control program.
-The user can control the power by click Model ID # on Monitor Control program.

Main Display (Monitor Control - Source)



Source can be changed from this tab
-After the user designates the monitor by click specific model ID # that he or she wants to control and the user check the specific source as shown on the tab, it will change as it is.

※All of features can be operated to monitors connected.
Model ID # of monitor can be set on monitor OSD menu.
If user set as "ALL", all the monitor connected will be showing one image regardless of Model ID #.

Main Display (Monitor Control - Image)

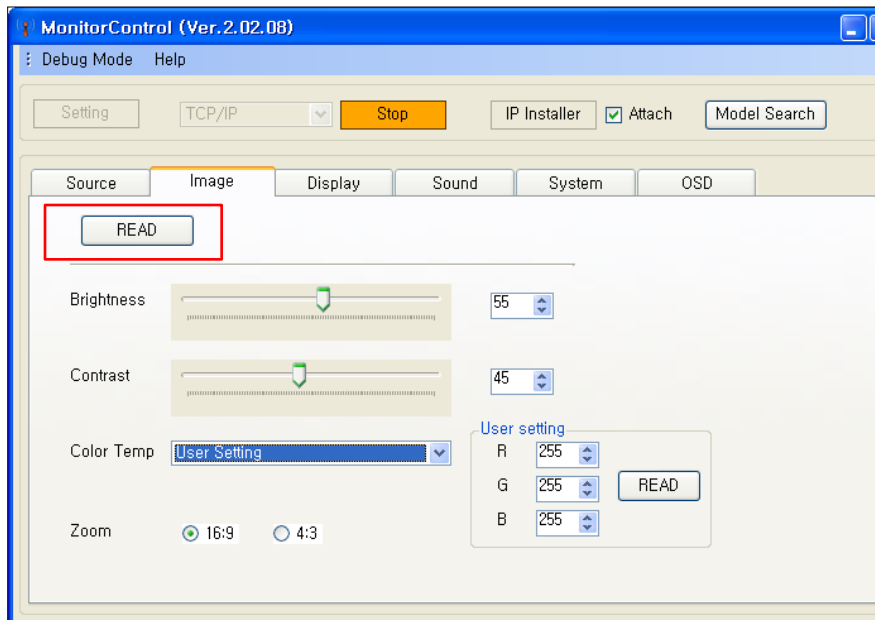
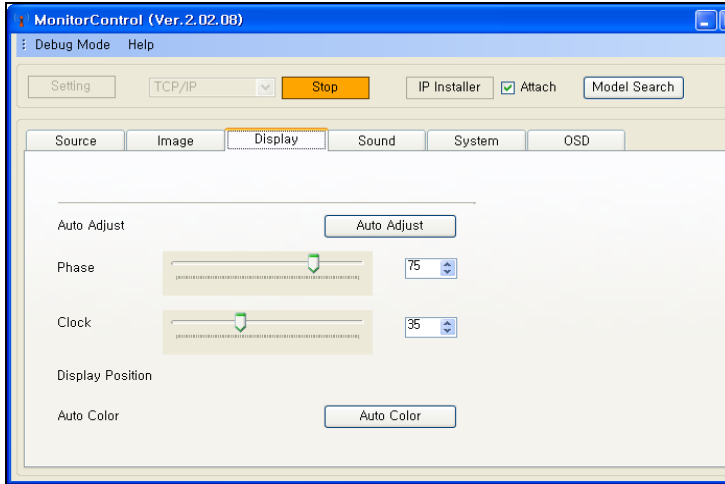


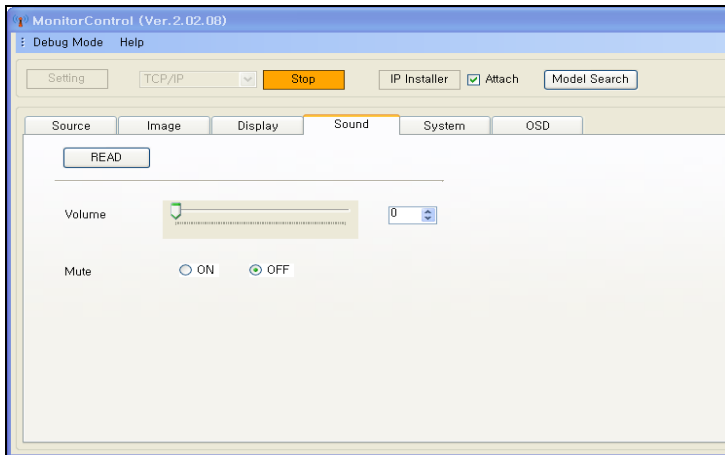
Image can be changed from this tab
It change the brightness, Contrast, Color Temp,
Zoom

**“READ” button is able to information of
Monitor to same Model ID in Source tap.
After read, if success, change orange color and
each element.**

Main Display (Monitor Control – Display, Sound) ViewZ

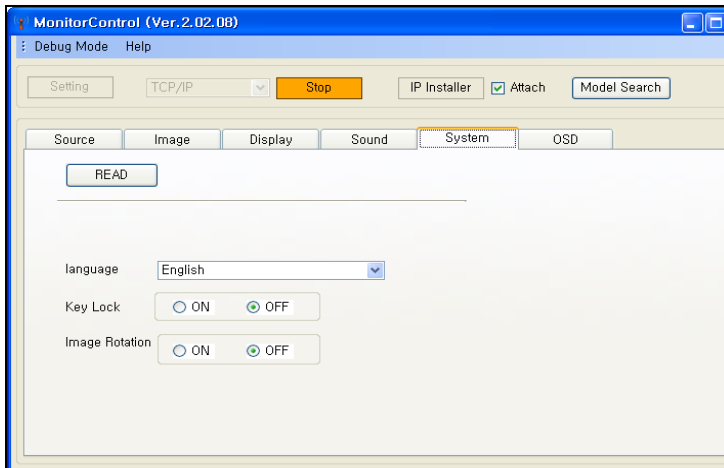


This tab can be used to PC-RGB(VGA).

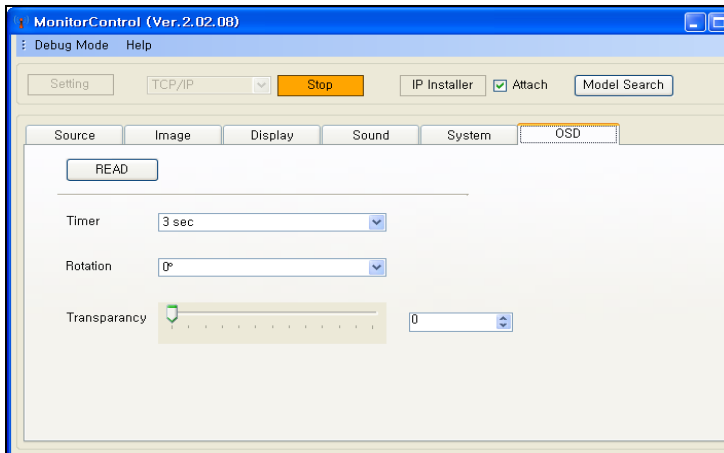


This tab can be used to Volume, Mute.

Main Display (Monitor Control – System, OSD)



System can be changed from this tab
It change the Language, Key Lock, Image Rotation.



OSD can be changed from this tab
It change the Timer, Rotation, Transparency

- END -